



# The Rockpool

**UNIT 106, 110**

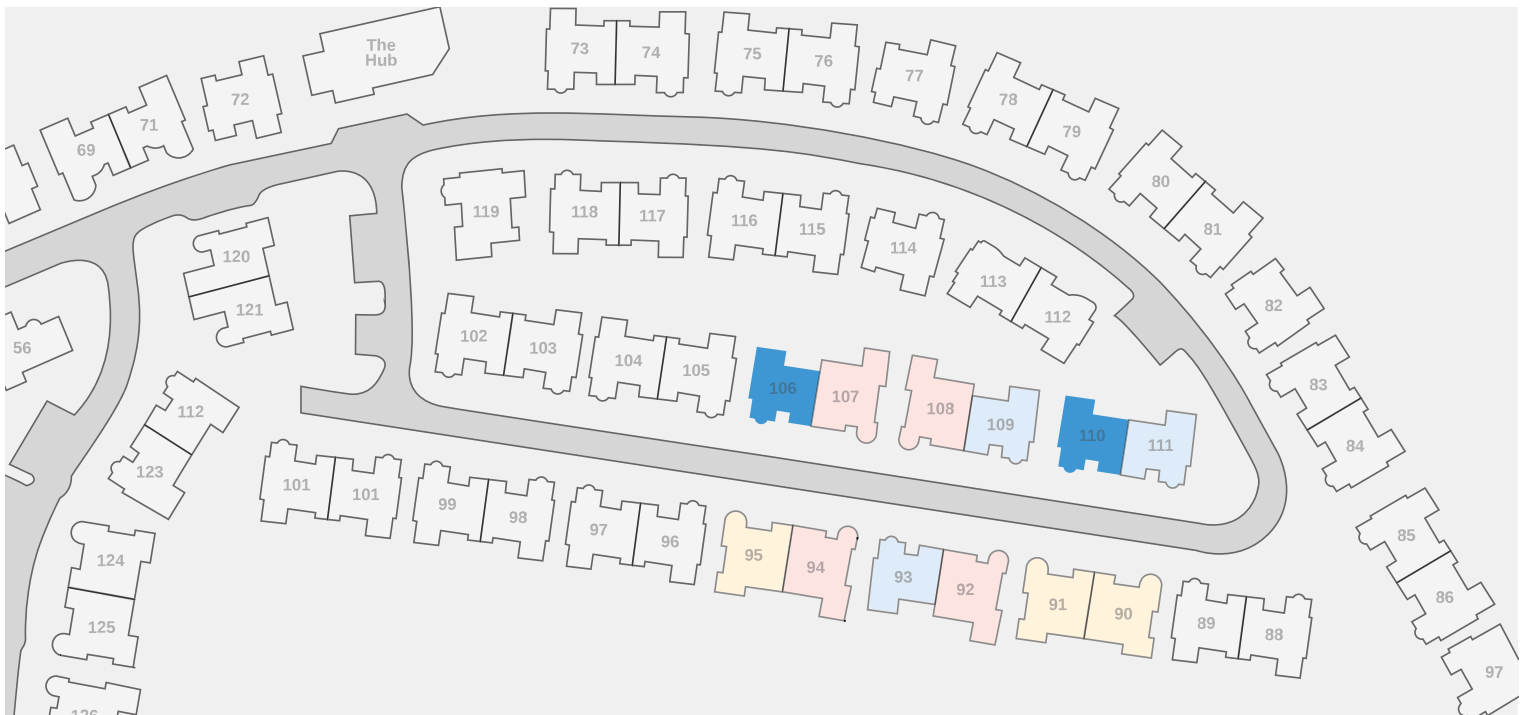


Combining style and simplicity, the Rockpool prioritises space and flow. Perfectly laid-out, the open plan lounge and dining space complements a chef's kitchen, complete with generous waterfall stone bench tops and quality appliances, while the cleverly designed study off the main entrance offers peace and seclusion.

The master suite, complete with ensuite and walk-in wardrobe is ideally positioned at the rear of the property for privacy, while a second light and airy bathroom features floor to ceiling tiles and thoughtful features.

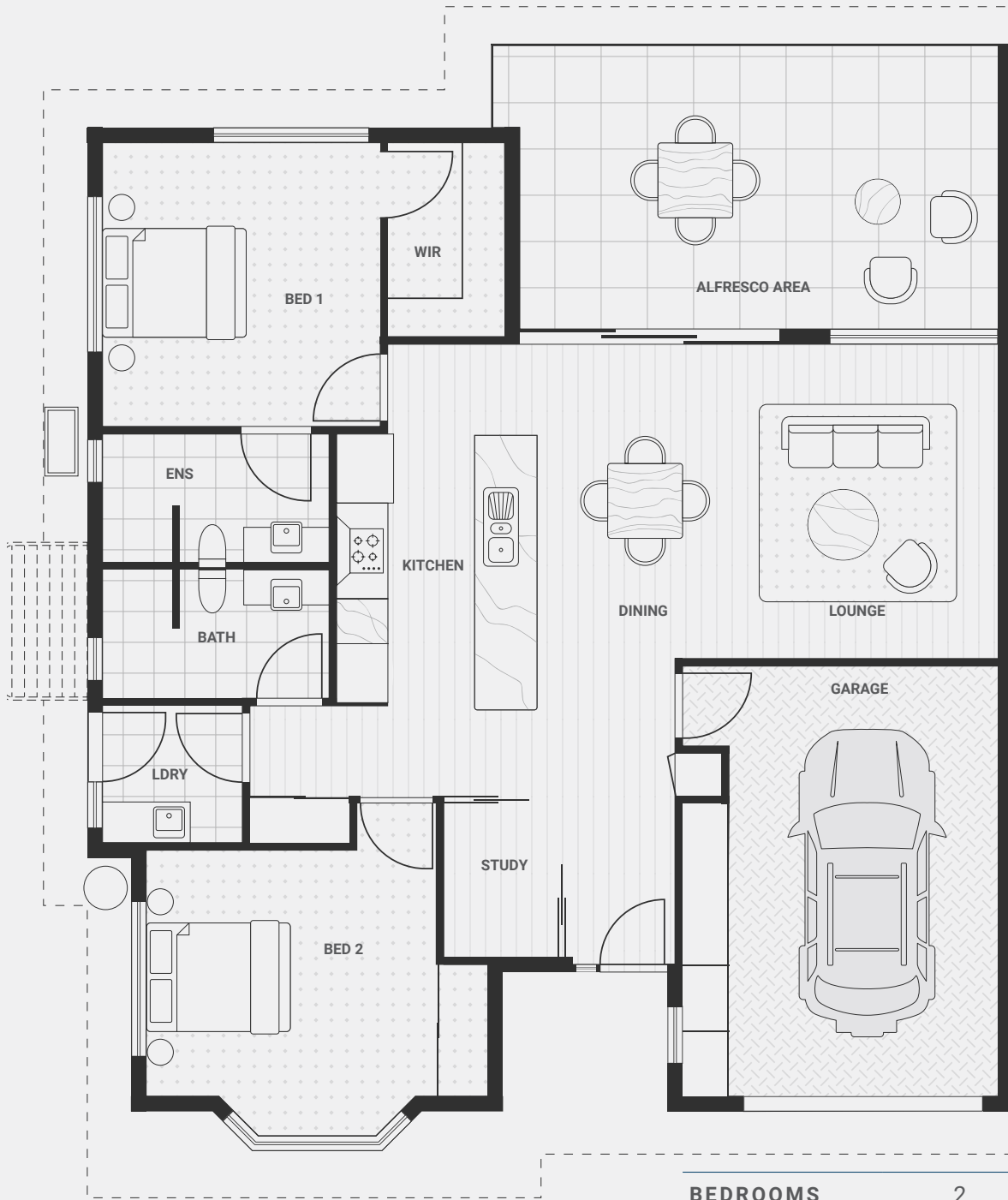
- FULLY DUCTED AIR-CONDITIONING WITH CLIMATE-CONTROLLED ZONES
- 9FT CEILINGS WITH FANS THROUGHOUT
- INSECT SCREENS AND SECURITY GRILLS FOR ADDED SECURITY AND PEACE OF MIND
- ZERO THRESHOLD FEATURES THROUGHOUT INCLUDING ENTRY, PATIO, BATHROOMS AND SHOWER
- SEMI FRAMELESS SHOWER SCREENS
- ERGONOMICALLY DESIGNED KITCHEN TO MINIMISE BENDING DOWN
- SOFT CLOSE DRAWERS AND CUPBOARDS
- GENEROUS WINDOWS WHICH LET IN PLENTY OF NATURAL LIGHT
- AMPLE STORAGE INCLUDING A DEDICATED LINEN CUPBOARD
- ELECTRIC GARAGE ROLLER DOOR
- A GENEROUS GARAGE WITH ADDITIONAL STORAGE AND A DEDICATED WORK BENCH
- DEDICATED GARDEN AND MAINTENANCE TEAM.

Would you like to know more? Call 1800 786 325 to meet the caring and friendly Sundale team and tour Coolum Waters – by Sundale.



# The Rockpool

UNIT 106, 110



UNIT 106,110 \$505,000

BEDROOMS	2
BATHROOMS	2
STUDY	1
GARAGE	1
UNIT SIZE	139.32m <sup>2</sup>
ALFRESCO	26.15m <sup>2</sup>