



The Driftwood

UNIT 92, 94, 108

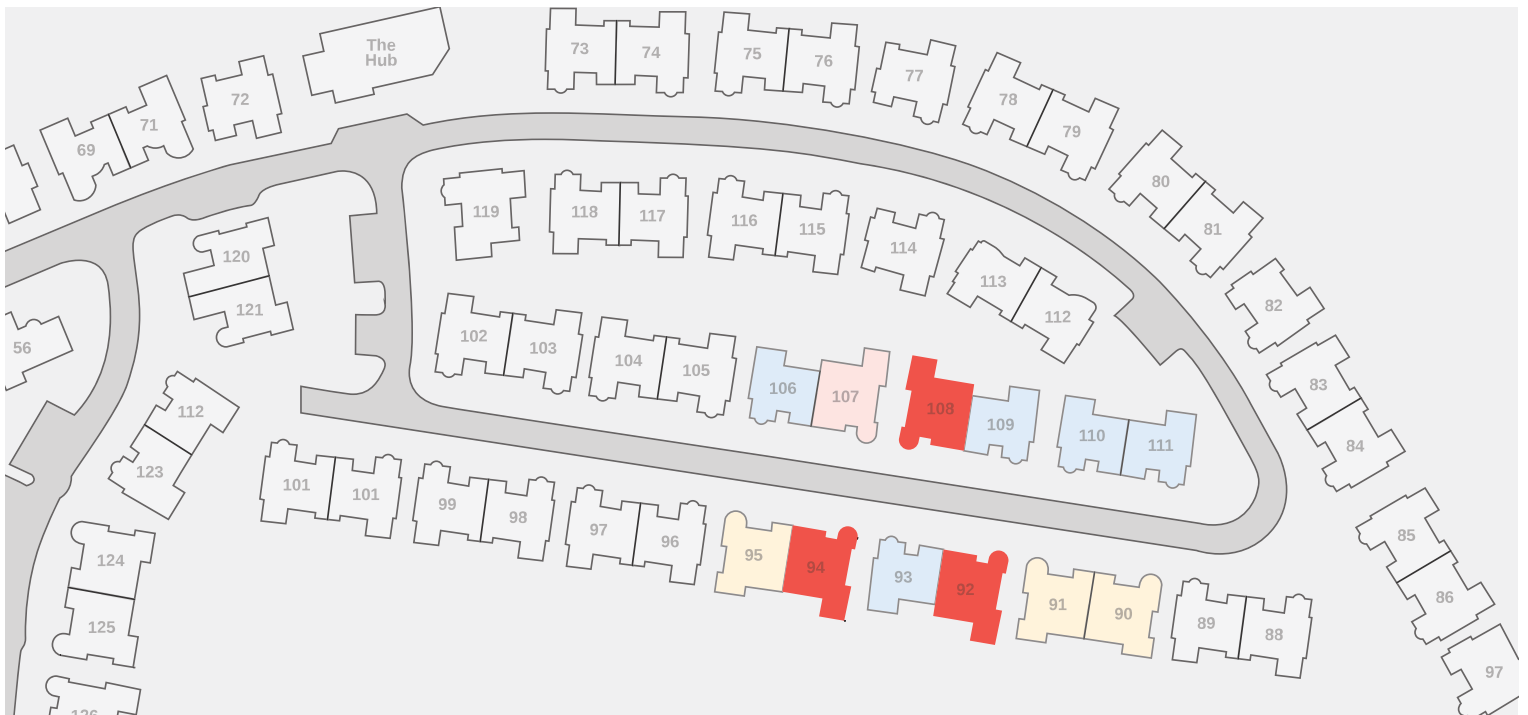


Blending style and convenience, The Driftwood combines space and substance. At the heart of Coolum Waters' premium product is three generous bedrooms, a spacious open plan living, dining and alfresco area, a cleverly designed study nook and a chef's kitchen, complete with waterfall stone bench tops and quality appliances.

The master suite, complete with ensuite and walk-in wardrobe is thoughtfully placed at the rear of the property for seclusion and privacy, while the light, airy bathrooms feature floor to ceiling tiles and elegant features.

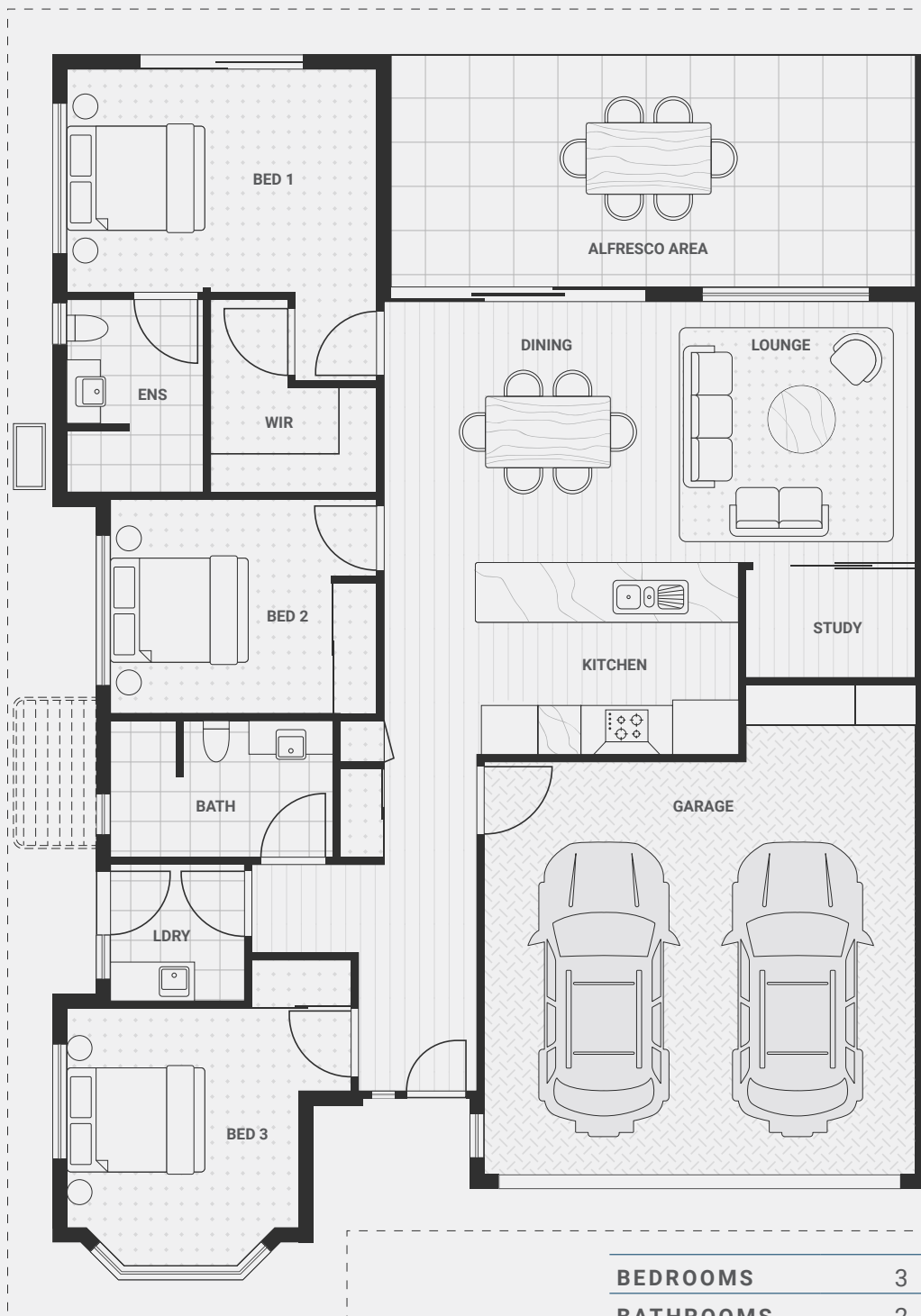
- FULLY DUCTED AIR-CONDITIONING WITH CLIMATE-CONTROLLED ZONES
- 9FT CEILINGS WITH FANS THROUGHOUT
- INSECT SCREENS AND SECURITY GRILLS FOR ADDED SECURITY AND PEACE OF MIND
- ZERO THRESHOLD FEATURES THROUGHOUT INCLUDING ENTRY, PATIO, BATHROOMS AND SHOWER
- SEMI FRAMELESS SHOWER SCREENS
- ERGONOMICALLY DESIGNED KITCHEN TO MINIMISE BENDING DOWN
- SOFT CLOSE DRAWERS AND CUPBOARDS
- GENEROUS WINDOWS WHICH LET IN PLENTY OF NATURAL LIGHT
- AMPLE STORAGE INCLUDING A DEDICATED LINEN CUPBOARD
- ELECTRIC GARAGE ROLLER DOOR
- A GENEROUS TWO-CAR GARAGE WITH ADDITIONAL STORAGE AND A DEDICATED WORK BENCH
- DEDICATED GARDEN AND MAINTENANCE TEAM

Would you like to know more? Call 1800 786 325 to meet the caring and friendly Sundale team and tour Coolum Waters – by Sundale.



The Driftwood

UNIT 92, 94, 108



UNIT 92, 94 \$555,000

UNIT 108 \$595,000

BEDROOMS	3
BATHROOMS	2
STUDY	1
GARAGE	2
UNIT SIZE	164.48m ²
ALFRESCO	25.35m ²